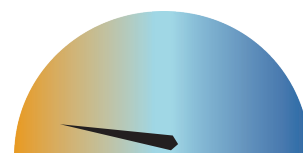


# CHEMATIC® 9250

## DESCRIPTION

Chematic® 9250 is a concentrated citric acid based cleaning compound. It has been formulated for the removal of acid-soluble soils in the pharmaceutical and cosmetic industries. The low foam surfactant package in Chematic® 9250 makes it ideally suited for high pressure cleaning applications, such as Clean-in-Place (C.I.P.), and power washing. The acid/detergent combination in Chematic® 9250 makes it effective in removing hardness scale and deposits, corrosion products, milkstone, metal oxides, and tarnishes. Perfectly suited for derouging stainless steel equipment. The detergent package makes this cleaner free rinsing and easy to treat in the wastewater process. Chematic® 9250 is manufactured following cGMP policies.



ALKALINE

## PHYSICAL PROPERTIES

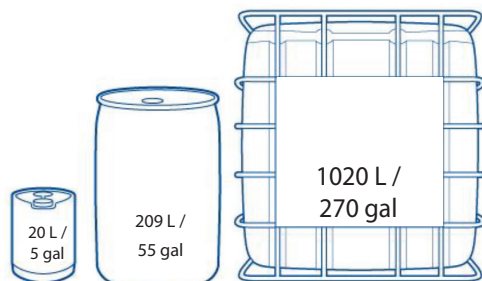
|                 |                     |                             |                               |
|-----------------|---------------------|-----------------------------|-------------------------------|
| Physical Form   | Liquid              | Specific Gravity at 68°F    | 1.200 - 1.230                 |
| Appearance      | Clear, Water-White  | Foaming                     | Low Foaming @ Use Temperature |
| pH Use Solution | (2% v/v): 2.0 - 3.0 | Typical Storage Temperature | 50 °F - 120 °F                |

## SUBSTRATE COMPATIBILITY

- Product is safe on stainless steel, glass, and most plastics and polymers.
- Product should be thoroughly rinsed off surfaces.
- Not recommended for soft metals.

*Precautionary Statement: Please refer to the current Material Safety Data Sheet.*

## AVAILABLE IN



**FOR ADDITIONAL INFORMATION,  
CONTACT CHEMATIC AT:**

630.410.7300  
chematic@dober.com  
www.dober.com

## CLEANING VALIDATION SUPPORT

TOC and other methods are provided by the Dober Group.

## APPLICATIONS & USAGE



CIP

COP

Spray

Concentrations from 2%-10% v/v  
Temperatures of 50°C–80°C



Manual

Concentrations from 2%-10% v/v  
Temperatures of 25°C–50°C